

Up Coming Events

July

Fri 1 July

Membership Fees due.

August

Thur 4/11 August

Maroondah Retirement Village,
Weed Working Bee, 9.30 – noon.

Sun 6 August

Tree Day Planting, 9.30 – 12.00.
Badger Creek RSVP to
toolebewonglandcare@gmail.com

Wed 17 August

Ctee meeting 7.30, via Zoom
- a change to the third week and the
Wednesday due to committee
unavailability the second Thursday.

October

Sun 2 Oct, 9-1 pm, Market Stall,
Healesville.

Committee Update

We have been very busy recently, and were unable to produce a June newsletter, so make a cuppa and take time to read this bumper issue. We hope you are keeping warm and dry in this typical Winter weather, which sees our Melbourne Water reservoirs holding around 87% this week. **Our membership fees are now due** and remain very low - \$10 Adult, \$5 Concession/Pensioner, \$15 Family. We urge you to consider paying for a few years at once to save admin time for our volunteer Treasurer, Sandra. Some of our members have already taken up this practice, which is much appreciated.

Work has commenced by a three member sub-committee to update our Rules to comply with the 2012 Model Rules provisions, our new Mission statement and purpose. Bronwyn is participating in Council information sessions to learn about the changes to the Child Safety regulations, which came into force on 1 July, and we expect to update our policy and procedures accordingly. Our Year 4 report to Council for our Community Engagement Grant (P4P) has been submitted, and we will receive a further \$3500 funding for Year 5. The grant has been extended for one year

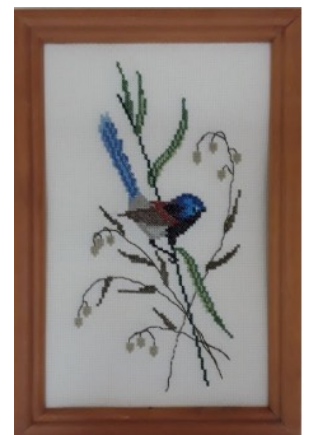
due to the cancelling of many activities due to Covid-19 restrictions.

Library Display

Our Healesville Library Display in August will have an animal theme this year, with Karen's Australian Animal quilt as the backdrop and some other craft items. If any members have Australian animal or plant craft items they'd like to contribute to the display, please let Karen know admin@hewi.org.au. Items will be secure in the locked display cabinet, and Karen will set up at the end of this month.



Karen's quilt



Blue Wren cross stitch

HEWI Brochure

Our brochure has been refreshed, and Council will print hard copies for us. We will be handing it out at a stall at the Healesville Community Market on Sunday 2 October. One of our members, Vicki, has kindly allowed us to share her stall so we don't have to queue up at 6 am with other causal stall holders, and we would appreciate HEWI members helping us by filling a two hour shift from 9-11am, or 11-1 pm. Holding these displays/stalls are actions in our Strategic Plan.

Coronation Park Planting with Healesville Primary School

Fortunately, the rain held off during our Healesville Primary School planting event at Coronation Park on Friday June 17. Due to Covid-19 and floods last year, we have had to cancel this regular event, and it was wonderful to be connecting with the students again. As it was a small site, we didn't invite Cummins Filtration or Melbourne Water to join us, but were ably assisted by council Bushland Team staff, lead by Paul Slinger. They did a great job again of site preparation and were constantly on the move drilling holes ahead of our keen planters. This year, we changed the format and divided the 40 students into two groups. Whilst one group was planting, Karen lead a nature walk along the Watts River track showing where we've seen platypus and possums, and emphasised the importance of picking up dog faeces to improve water quality. Many thanks to the HPS teachers and family volunteers, and our members - Evelyn and Bronwyn - who volunteered on the day with the planting crew. Just over 1000 plants were put in the ground, and we featured in this month's [YRC Environmental Volunteers Newsletter](#).



Happy HPS planters

Anniversary Planting May 2023

In late May next year, we expect to hold a 21st Anniversary Planting morning at Coronation Park with the Healesville Lions Club and Council to celebrate this wonderful community initiative, which brought together just about every group in Healesville to plant a section of the park. The old wooden signs are rotting, and we hope to have a new metal sign at the entrance to the park stating information about the project and listing the groups involved.

Badger Creek CFA Visit

On Saturday 18 May, several HEWI members joined with Mt Toolebewong & District Landcare and Badger Creek Community members, to meet the captain of the Badger Creek CFA and brigade volunteers. We had a valuable information exchange and learnt about resources available to prepare ourselves and our properties for fire and other emergencies. We have already posted a link to some relevant sites on our Facebook page and urge all members to produce a [Fire and Emergency](#) Plan. The Healesville Community Bushfire Group is now renamed the [Healesville Community Emergency Group](#), and the Healesville area has been nominated for a trial site for an Emergency Hub. As we discovered after the June 2021 storm, severe weather events can occur at any time of the year. We will share more information via our newsletters and Facebook page throughout the year.



"The views expressed in this newsletter are those of the contributors and not necessarily those of this group."



"Proudly supported by Yarra Ranges Council"

Facebook: HEWI www.facebook.com/hewinews

Graceburn Project: www.facebook.com/Grace-Burn-Project-327516467740122/



*Healesville RSL
student volunteers*

*Kookaburra dining
after weeds cut
back*



Grace Burn Project

We have been able to access the RSL again with Woori Farm School students to do some weed control and prepare the site for planting this term. The three groups and teachers did a great job with grass trimmers to cut back weedy grasses, and we removed Tobacco Plant seedlings, and Blackberry and *Calystegia* tendrils. A further 300 native plants will go in the ground to complete this current RSL/Melb Water grant.

On Thursday 4 August from 9.30 – noon, we will be volunteering with Mt Toolebewong & District Landcare Group members at the Maroondah Retirement Village, Don Rd, Healesville, to cut back weedy grasses in revegetated sections and English Ivy growing up the Manna Gums. The MRV also receives a Melb Water grant to protect the banks of the Grace Burn, which covers some work by contractors, but with Covid restrictions we haven't been able to offer them student assistance. The weeding here is more delicate and not appropriate for grass trimmers, and if any HEWI members can come along with their gloves and hand tools, that would be great. Please RSVP to Karen for catering admin@hewi.org.au If the weather is bad, we will have Thursday 11 August as the backup date.

Council Matters

David Harper, Manager Sustainable Environment and Facilities, has resigned from Yarra Ranges Council. He is having a well-earned break, and we wish him well in his future endeavours. We sincerely thank David for his many hours of assistance to HEWI on environmental and planning matters during his 11 years of service.

Last week, McDonald's withdrew one appeal against the decision by Council to refuse their amendments to the planning permit for their restaurant at 17-25 Maroondah Highway, Healesville. In June at VCAT, the service station developers for this site won their appeal against most of the planning conditions imposed by council, and potentially this might enable McDonald's to submit a new request to change permit conditions in the future.

\$250 Power Saving Bonus Starts 1 July 2022

Check for the cheapest electricity rates for your home, and get a \$250 reward. Note, unlike some previous schemes, this is not automatically given to Pensioner card holders – you must apply via the [Energy Compare](https://energycompare.com.au/) website.

App to help with wise gardening

Sustainable Gardening Australia (SGA) launches *WiseGardening* app to assist gardeners choose safer ways of dealing with pests, diseases and weeds.

You can protect your garden from pests, diseases and weeds without nasty chemicals by grabbing an app that rates over 850 products and methods.

Check it out at <https://wisegardening.sgaonline.org.au/>

A decisive moment for nature in the Yarra Ranges *(copied)*

An open letter to Planning Minister Lizzie Blandthorn

We write to you about your role in deciding the future of the Yarra Ranges National Park – home to one of Victoria's rare stands of Cool Temperate Rainforest, rare and endangered native wildlife, and Melbourne's water supply.

For many years a broad community of local residents, nature-lovers, experts, hydrologists and ecologists have raised concerns about reckless plans by the Shire of Yarra Ranges to clear protected habitat for mountain bike tracks in the national park.

As the most cleared state in Australia, Victoria's national parks hold some of the greatest surviving natural treasures. We call on you to carefully assess the impacts of this proposal and to treat your decision with the gravity it deserves.

We ask you to reject the small portion of tracks that will bring great and needless risk to:

- One of the most intact remaining patches of threatened Cool Temperate Rainforest in Victoria
- The critically endangered Mount Donna Buang Wingless Stonefly that occurs no place else on earth
- Nationally and state-listed threatened wildlife that live, breed and feed near the proposed track corridor
- The Coranderrk Closed Water Catchment as highlighted by Melbourne Water
- The liveability and local character of Warburton – including the increased risk of the fire-related emergencies

We call on you to recognise that the primary purpose of the Yarra Ranges National Park is to preserve the nature within it as a whole for everyone to enjoy – now and into the future.

We seek to illuminate the dangerous precedent that will be set for Victoria's national parks and natural areas if planning controls are abused in order to undermine our nature laws for the sake of inappropriate development.

The signatories of this letter represent thousands of Victorians who call on Planning Minister Blandthorn to protect the integrity of the park, its sublime rainforests and the unique native wildlife that depend on it.

As the planning minister, you have the power to halt this proposal in its tracks. You can help prevent the spread of deadly tree killing pathogens that will damage rainforest, stop the sedimentation of local creeks and streams, deny the unnecessary removal of habitat and protect a key water source. We stand ready to support a revision of the Warburton Mountain Bike Destination project that does not commercially exploit the natural values of the Yarra Ranges National Park and is sensitive to local community features.

United in our passion for protecting the natural world and Victoria's dwindling natural areas, we call on you to reject the proposed mountain bike tracks within the Yarra Ranges National Park.

Signed organisations:

- | | |
|--|---|
| – <u>Environment Victoria</u> | – <u>Plastic Bag Free Warby</u> |
| – <u>Entomological Society of Victoria</u> | – <u>Yarra River Keeper</u> |
| – <u>Friends of the Earth Melbourne</u> | – <u>Victorian National Parks Association</u> |
| – <u>Friends of the Leadbeaters Possum</u> | – <u>Warburton Environment</u> |
| – <u>Friends of Myrtle Beeches</u> | – <u>Knox Environment Society</u> |
| – <u>Rethink Warburton Mountain Bike Destination</u> | – <u>Healesville Environment Watch inc</u> |
| – <u>Southern Dandenongs Landcare Group</u> | |



"The views expressed in this newsletter are those of the contributors and not necessarily those of this group."



"Proudly supported by Yarra Ranges Council"

Facebook: HEWI www.facebook.com/hewinews

Graceburn Project: www.facebook.com/Grace-Burn-Project-327516467740122/